

DuraVilla Eco-Cabins

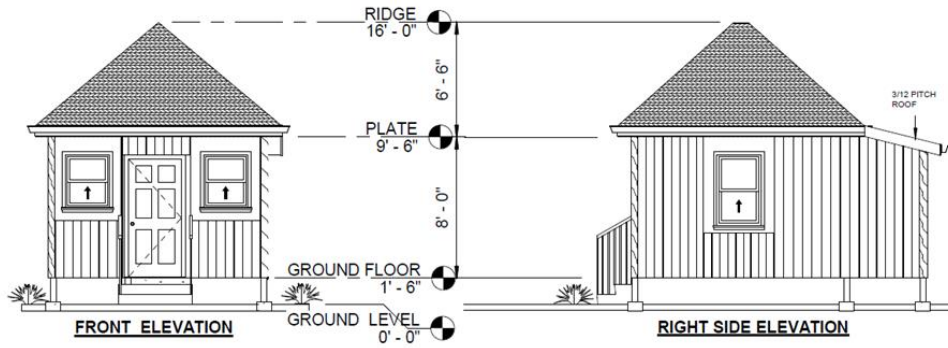
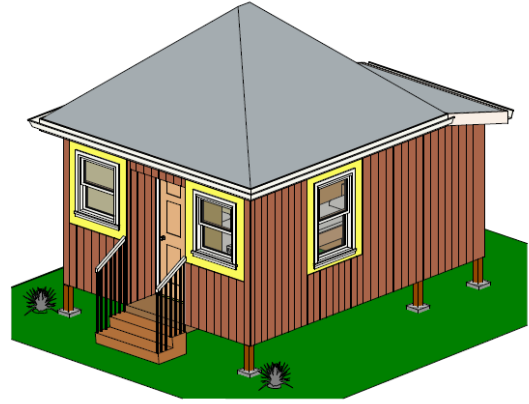
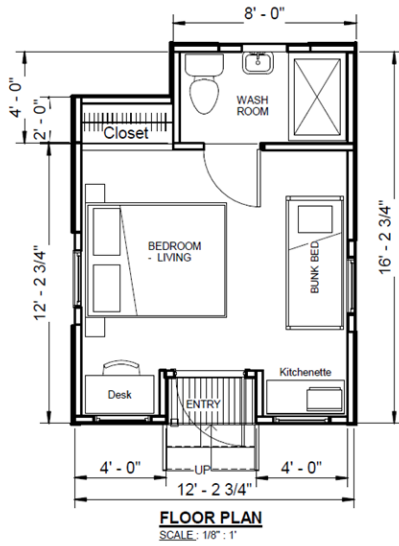
Duravilla Eco-Cabin offers a sustainable and simple building with essentials for your backyard or off grid living experience. The cabin is built for a low ecological footprint to maximize the use of durable hardwoods which are locally harvested from sustainably managed forest.

From foundation to roof, various hardwoods are used at each stage of construction to bring the best value from our forest to the cabin. The open floor-plan is designed for studio living which can be expanded from 192 SF to 306 SF.

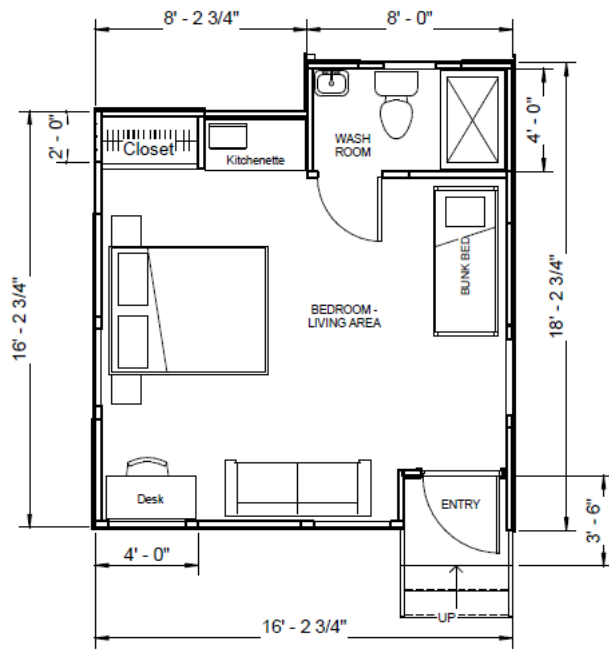
In a controlled environment, the wall and roof panels are carefully produced in the factory and installed at the jobsite. Within two weeks the envelope of a typical two- and three-bedroom house can be easily installed which includes floor, walls, and roof.



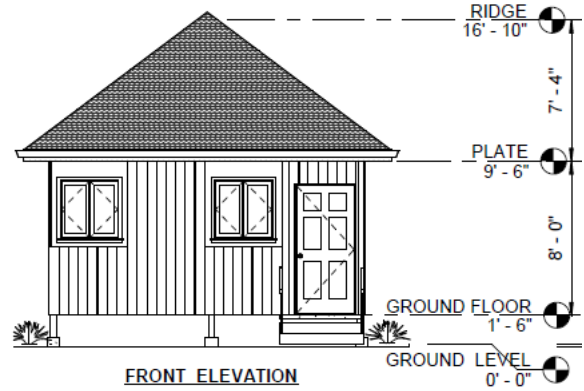
Eco-Cabin Model DVH-EC-192 Studio - 192 SF



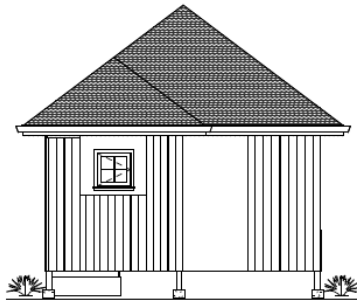
Eco-Cabin Model DVH-EC-306 Studio - 306 SF



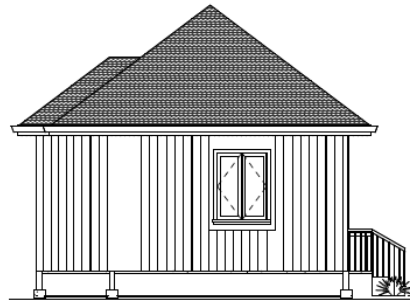
FLOOR PLAN
SCALE: 1/8" = 1'



FRONT ELEVATION



BACK ELEVATION



LEFT SIDE ELEVATION